

Lenovo
ThinkPad

Smarter
technology
for all

Lenovo

Lenovo AI-ready ThinkPad P series mobile workstations



AI PCs built for business

2024 Lenovo. All rights reserved.

ThinkPad P1 (16" Intel®)



The power they need, the machine they want

Lenovo's new AI-ready ThinkPad P series mobile workstations are built for customers with the heaviest workloads

Lenovo is bringing the power of AI to your customers' businesses with a new portfolio of AI-ready mobile workstations. With the perfect balance of performance and power efficiency, they provide the portability of a laptop and the performance of a workstation, with transformational processing to handle the toughest next-generation AI workloads and ISV applications.



2024 Lenovo. All rights reserved.

Lenovo
ThinkPad

Lenovo's portfolio of AI-ready mobile workstations delivers Smarter AI for all. Powered by Intel® Core™ Ultra processors, Lenovo AI-ready mobile workstations enable your customers to achieve more with next-generation AI workloads. By combining Intel® Core™ Ultra processor and Intel vPro® with NVIDIA professional graphics on operating systems like Microsoft's Windows 11, they deliver exceptional performance and reliability across the most demanding ISV applications.

Ideal for AI consumption, AI development, data analytics and generative AI, these powerful workstations are ready to revolutionize how your customers work.



intel
vPRO

AI PCs built for business

Bringing AI to business workstations

Intel® Core™ Ultra processors



Combining a CPU, GPU, and integrated Neural Processing Unit (NPU) enables the next wave of business features and sustained heavy AI workloads.



These engines work together to deliver ultra-premium performance, AI-readiness and true mobility for greater productivity throughout the day.



With the latest Intel vPro® and Intel® Evo™ Edition, your customers can enjoy the perfect blend of power, premium design, and mobility.

Lenovo

2024 Lenovo. All rights reserved.

Lenovo ThinkPad P series
mobile workstations

The portability of a laptop, the performance of a workstation

Lenovo's workstation portfolio is AI-ready, meaning we have the right combination of hardware configurations and software partners to ensure the guesswork is taken out of your customer's AI project.



2024 Lenovo. All rights reserved.



Combining Intel® Core™ Ultra or i9 HX-series processors with Intel vPro® and NVIDIA GPUs delivers a flexible, high-performance, and energy-efficient experience. The Intel® AI Boost NPU is dedicated to handling light, continuous AI tasks, while the NVIDIA GPU runs more demanding tasks.

Lenovo sets the standard for mobile workstations and ensures best-in-class reliability, ideal for AI model development, data analytics and generative AI.

ThinkPad P16

Key features

Next-level power and performance on-the-go



Intel vPro® Platform featuring
up to 14th Gen Intel® Core™
i9 HX-series processors



Up to NVIDIA RTX™ 5000 Ada
16GB GDDR6 VRAM



Up to 192GB DDR5 5600MHz
(4x SoDIMMs in ECC or non-ECC)



Up to 8TB M.2 PCIe® Gen4
storage (up to two 4TB NVMe
Performance SSDs)



16" panel with a 16:10 aspect
ratio display in up to UHD+



ISV certified for leading applications



ThinkShield security and
Touch Fingerprint Reader



Intel® Wi-Fi® 6E AX211 (2x2ax)
and Bluetooth® 5.35,6



Eyesafe® display



Manufactured from recycled materials



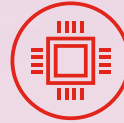
ThinkPad P1

Key features

The perfect combination of power, ultra-premium design and true mobility



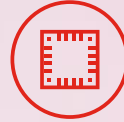
Lenovo
ThinkPad



Intel® Core™ Ultra 9 processors with Intel vPro® and an integrated Neural Processing Unit (NPU)



Up to NVIDIA RTX™ 3000 Ada Generation 8GB mobile GPU or up to NVIDIA® GeForce® RTX 4070 8GB mobile GPU



Up to 64GB DDR5 memory



Up to 8TB M.2 PCIe® Gen4 storage (up to two 4TB NVMe Performance SSDs)



ISV certified for leading applications



The latest security features including dTPM 2.0, an embedded chip dedicated to storing encryption keys



Intel® Wi-Fi® 7 BE200 802.11be and Bluetooth® 5.4 vPro



16" panel with a 16:10 aspect ratio, narrow bezel, and optional OLED touchscreen



Low blue light displays, Dolby Vision® and color calibration

Lenovo

2024 Lenovo. All rights reserved.

ThinkPad P16v i

Key features

Built for power users who require the flexibility to work anywhere at any time



2024 Lenovo. All rights reserved.

Lenovo
ThinkPad



Up to Intel® Core™ Ultra 9 processors with Intel vPro® with an integrated Neural Processing Unit (NPU)



ISV certified



Support for up to NVIDIA RTX™ 3000 Ada Generation mobile GPU



Up to 96GB DDR5 memory at 5600MHz



Up to 4TB M.2 PCIe® Gen4 NVMe performance SSD (up to two 2TB drives)



Intel vPro® security and ThinkShield



Built to handle the fastest PCIe® Gen 4 storage technologies



Ultra Performance Mode and Self Healing BIOS



Featuring a 16-inch 16:10 display with A UHD option



Ideal for architects, higher education, software developers, and beyond

ThinkPad P16s i

Key features

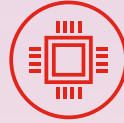
The perfect blend of reliable performance, sustainability and portability



Lenovo

2024 Lenovo. All rights reserved.

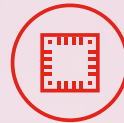
Lenovo
ThinkPad



Up to Intel® Core™ Ultra 9 processors with Intel vPro® with an integrated Neural Processing Unit (NPU)



Support for up to NVIDIA RTX™ 500 Ada Generation 4GB mobile GPU



Up to Up to 96GB DDR5 memory at 5600MHz



Up to 2TB NVMe PCIe® Gen4 SSD



Thin and lightweight chassis with a 16" display in up to UHD+ and optional OLED touchscreen



ISV certified for leading application like AutoCAD®, Revit®, and SOLIDWORKS



Built with sustainable materials and certifications



Ideal for engineers, architects, and students, whether collaborating in the office, on a job site, and beyond

ThinkPad P14s i

Key features

Designed for highly mobile power users



Intel® Core™ Ultra 9 processors with Intel vPro® and an integrated Neural Processing Unit (NPU) for AI tasks



Up to 2TB NVMe PCIe® Gen4 SSD



Up to NVIDIA RTX™ 500 Ada Generation 4GB mobile GPU



dTPM 2.0 and ThinkShield security features



14.5" chassis with an optimized 16:10 display in up to 3K resolution



ISV certified by many of the leading industry software applications



Up to 96GB DDR5 memory at 5600MHz



Intel® Wi-Fi 6E AX211 (2x2ax) and Bluetooth™ 5.3 vPro



Better together Lenovo ThinkVision P series displays

Complete your customer's workstation solution with integrated Lenovo ThinkVision P series displays.



Dual monitor setups with a desktop or notebook have been proven to increase productivity.



With higher resolution and good color performance, **users are equipped to create the most innovative content** when combined with a ThinkPad workstation.



Ergonomically designed to ensure user comfort and greater manoeuvrability.



Lenovo ThinkVision displays conform to the **highest international standards and** regulations to ensure minimal impact on the environment.

Performance ISV certification



Lenovo ThinkPad P series mobile workstation is tested and certified by independent software vendors (ISVs). ISV certification ensures software and hardware compatibility, stability, and reliability so you can enjoy optimal performance.

What ISV certification means for customers:



Lenovo
ThinkPad



Complete peace of mind. Work with confidence knowing that hardware will never be a barrier to bringing ideas to life.



Time savings. Lenovo has already conducted rigorous testing to ensure optimal application performance and hardware reliability.



Ultimate productivity and efficiency. Lenovo Workstations are fine-tuned to run applications for an exceptional, seamless user experience.



Support. Using an ISV-certified workstation provides access to the highest level of support and technical resources.

Performance

Lenovo Performance Tuner (LPT)



Ensuring customers get the most out of their investment, Lenovo Performance Tuner (LPT) is a free software that adjusts system resources to optimize performance and user experience, all in one easy-to-access tool.



Increase performance

Eliminate interruptions to allow single-threaded applications, like CAD, to have dedicated core support for lightning-fast workflows.



Increase productivity

Prevents bottlenecks by carving out resources for heavy workloads, like multi-threaded applications, while allowing your system to continue to function during renderings or simulations.



Optimize manageability

Maintain control and flexibility through customizable application profiles, admin control, and lockable application profiles, perfect for IT professionals and resource monitoring.

Reliability MIL-SPEC/MIL STD



MIL-SPEC is a set of standards designed to test durability, ruggedness and reliability. These tests cover extreme environmental variables including temperature, pressure, dust, humidity and vibration testing. We have tested Lenovo workstations for 12 MIL-SPEC methods and 22 procedures to ensure they can handle any environmental hazards.



Mechanical shock – High acceleration, repeated shock pulses over 18 times.



Vibration – Tested while running and turned off.



Sand and dust – 140 mesh silica dust for six hours and silica sand for 90-minute cycles.



Fungus – 28 days with common fungus sources.



Altitude – Tested for operations at 15,000 feet.



Solar radiation – Seven 24-hour cycles of simulated U.V. radiation.

Reliability ThinkShield

Lenovo ThinkShield delivers comprehensive protection across the entire device lifecycle. From Supply Chain Assurance that safeguards devices from the ground up to advanced security features that protect against threats below the operating system and secure data from the operating system to the cloud. ThinkShield also integrates AI for robust threat detection and response.



Lenovo

© 2024 Lenovo. All rights reserved.



Security Risk Assessment by C&H – Identifies vulnerabilities and prioritizes mitigation. Manages risks in both internal and global supply chains, ensuring compliance with evolving regulations.



Supply chain assurance – Protects against emerging threats, ensures transparency, identifies counterfeit components, and offers easy comparison of platform data.



Below the operating system – Provides privacy features like webcam shutters, secure firmware with self-healing BIOS, tamper-evident packaging, and tools for secure data disposal.



From the operating system to the cloud – AI-powered endpoint protection, data defense, Lenovo Patch, patented browser and file protection, remote BIOS management, cloud backup, and asset management solutions.

Usability and configurability Linux

Perfect for scientists, developers, engineers, and other experts, Lenovo workstations work intuitively with the host Linux OS and offer full end-to-end support with ongoing updates. By certifying our entire portfolio of ThinkPad P series mobile workstations, we prioritize the needs of these specialized end-users and guarantee our workstations will deliver the best possible Linux experience. Lenovo's Linux preloads remove end-user complexity, and give IT managers more visibility and autonomy over devices in their network, in addition to integrated support from both Lenovo and the operating system.



Supported releases – Lenovo works with hardware vendors to provide upstream drivers, firmware and software components for our platforms.



Tested and certified – Officially tested and registered with Ubuntu and Red Hat Enterprise Linux.



Community – Lenovo is continuously collaborating within the Linux community to add functionality and ease of use across numerous Linux distributions.

Usability and configurability ESG



Lenovo is a recognized leader in sustainable operations, with EPEAT® Gold certifications for our entire ThinkPad P series mobile workstation portfolio. We make every effort to reduce our carbon footprint with conscious material selection, innovative product packaging, and energy-efficient manufacturing.

Lenovo
ThinkPad



Mixed recycled plastics used in 100% of the Lenovo ThinkPad P series product line.



Built with 100% conflict-free minerals thanks to Intel® Core™ processors.



Innovative packaging allows secure shipment using lightweight, bio-based materials.



Breakthrough low-temperature solder manufacturing process for long-term reliability and reduction of our carbon footprint.



Further your own sustainability agenda by joining Lenovo 360 Circle, our ESG-focused peer-to-peer channel community confronting today's sustainability challenges.

Lenovo

2024 Lenovo. All rights reserved.

Lenovo ThinkPad P series mobile workstations Built for forward-thinking businesses



Lenovo ThinkPad P series mobile workstations are designed for **users that need to tackle compute-intensive workflows on the go.**



Lenovo ThinkPad P series mobile workstations provide **creative professionals** with the power and reliability needed for demanding applications like AutoCAD®, Revit®, and SOLIDWORKS®.



Power users on the go can rely on ThinkPad for ultra-premium performance and mobility, thanks to Intel® Core™ Ultra processors (ThinkPad P1) and Intel Core™ HX-series processors (ThinkPad P16), and NVIDIA RTX™ GPUs.



Ideal for AI model development and data analytics, Lenovo ThinkPad P series mobile workstations offer best-in-class reliability and exceptional performance for the most demanding ISV applications.



Lenovo ThinkPad P series mobile workstations combine high performance with eco-friendly materials and energy-efficient design, perfect for **businesses committed to sustainability.**



Lenovo's AI-ready ThinkPad P series mobile workstations enhance collaboration with advanced features like Windows Studio Effects and Lenovo View, ideal for **remote and office workers.**

Why Lenovo for AI-ready mobile workstations Grow with Premier Support Plus

We help to strengthen your position
as your customers' trusted partner
with Premier Support Plus.

Complement your capabilities with
Lenovo's world-class support solution
to improve market reach and be more
competitive. This 24/7/365 advanced
service provides seamless support
from anywhere by phone, chat or email.



AI-powered proactive and
preventative support helps
identify and resolve issues
before they're a problem



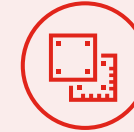
Technical support available
in 100+ markets



Single point of contact for
case management



Technical Account Managers
for escalation management



Comprehensive OEM
software support



Priority service delivery
and repair parts



Customized reporting
and product support

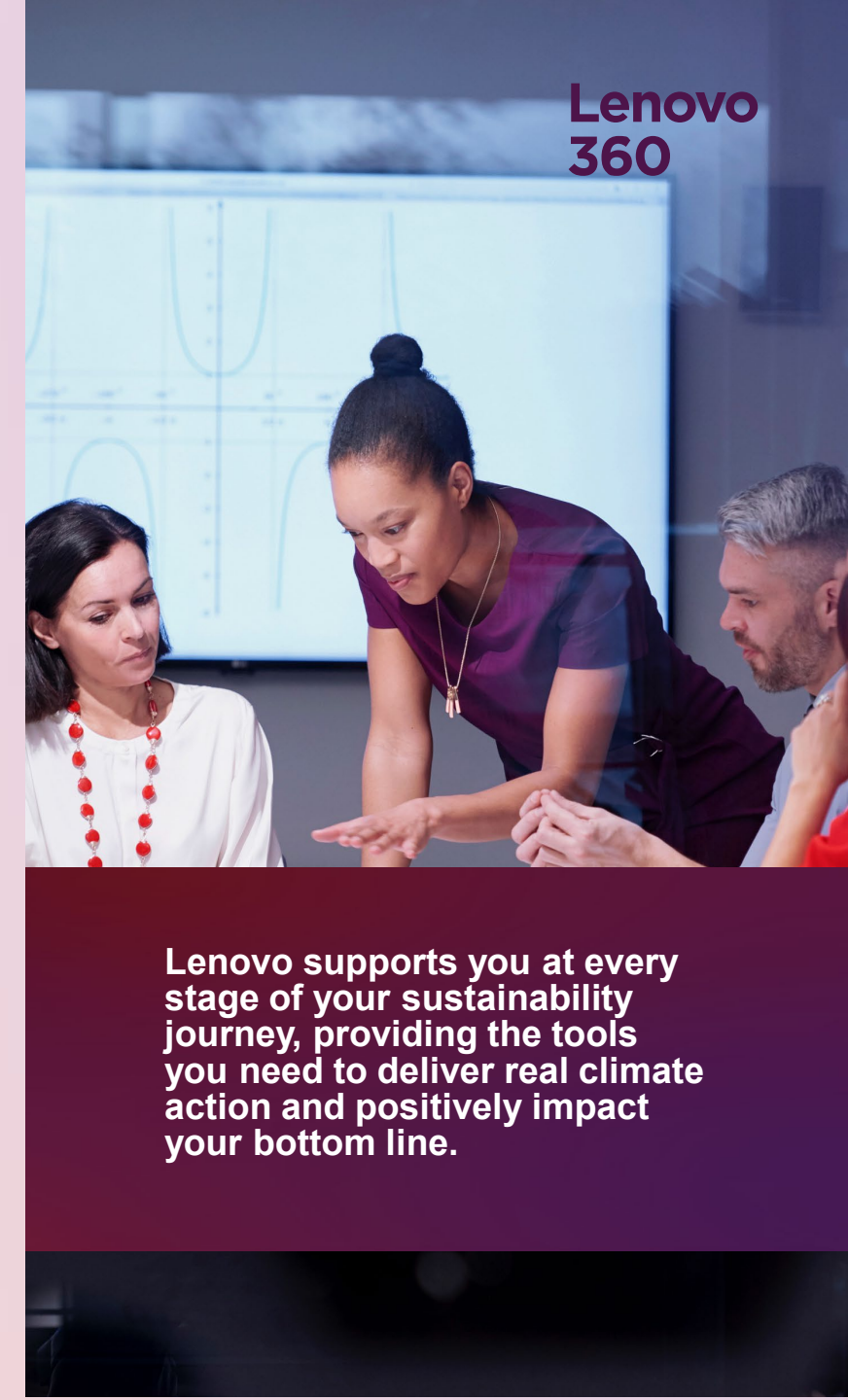


Lenovo ThinkPad P16

CO₂ and Sustainability SSG Integration

We all share the responsibility to accelerate the development of sustainable technology while promoting inclusivity and social fairness. As ESG (Environmental, Social, and Governance) considerations increasingly take center stage for your organization and your clients, collaborating to create a more circular and sustainable economy is crucial.

- ✓ Lenovo's strong dedication to social responsibility, specialized services, and an active ESG community empower you to fulfill the growing demand for sustainability among customers, enhancing your competitive edge.
- ✓ Sustainability is embedded throughout Lenovo's comprehensive product range, enabling you to provide customized products and services that assist customers in lowering their carbon emissions and reducing environmental waste.
- ✓ Lenovo helps you strengthen your ESG initiatives and make sustainable IT solutions more accessible. We do this through lower-carbon shipping methods, recycled plastics in packaging and products, extensive ENERGY STAR® certifications, or innovative technologies like Lenovo Neptune™ Liquid Cooling.
- ✓ Lenovo's CO₂ Offset and Asset Recovery Services enable you to assist customers in aligning their technology needs with evolving sustainability demands, while generating recurring revenue through flexible, scalable, and eco-friendly consumption models via TruScale as-a-service solutions.
- ✓ Through Lenovo 360, you'll have access to crucial marketing tools to raise awareness for sustainability services, along with the chance to join Lenovo 360 Circle – a vibrant community of partners addressing today's sustainability challenges, enabling you to contribute to rapid advancements in the global IT industry.



Lenovo
360

Lenovo supports you at every stage of your sustainability journey, providing the tools you need to deliver real climate action and positively impact your bottom line.

Lenovo

2024 Lenovo. All rights reserved.

Why Lenovo for AI-ready mobile workstations: Simplifying sales with Lenovo TruScale Device as a Service (DaaS)

With Lenovo TruScale DaaS, you can equip customers with cutting-edge AI-ready workstations, without large capital outlays.



Scalable, pay-as-you-go technology model.



Monitor device health, usage with proactive, predictive analytics.



Include end-to-end services that match the customer need.



Add or remove devices, as required.



Predictable monthly fees.



Pause services as business needs change.

Why Lenovo for AI-ready mobile workstations

Grow with Premier Support Plus

There is no substitute for OEM expertise when it comes to ensuring uptime, security, and safeguarding IT investment. By attaching Lenovo services like Premier Support Plus to Lenovo hardware sales, you can be sure your customers will enjoy an exceptional support experience from those who know the technology best.

With access to unparalleled technical support and security services in addition to a comprehensive pocket-to-cloud technology portfolio, Lenovo enables you to offer an end-to-end service to customers while increasing your share of wallet. Furthermore, 24/7 global reach means our best in-class services can scale, adapt, and evolve to meet the specific needs of customers of all sizes in any geography.



2024 Lenovo. All rights reserved.



- ✓ AI-powered tools that predict issues before they become problems.
- ✓ Technical support available in 100+ markets, 24x7x365, through chat, phone or email.
- ✓ Single point of contact for case management.
- ✓ Sealed battery protection for warranty beyond standard coverage.
- ✓ Comprehensive OEM software support.
- ✓ Priority service delivery and repair parts.
- ✓ Enhanced data security with Keep your Drive Service.
- ✓ International Service Entitlement for protection for users that are overseas.

Why Lenovo for AI-ready mobile workstations

Get complete support with Lenovo 360

Our global partner framework, Lenovo 360, gives you the resources to invest in your success, broaden your expertise and strengthen your competitive position by adapting to change.



Enable – Simplify your everyday business tasks with our outcome-based solutions, automated marketing resources, sales enablement tools and AI resources on Lenovo Partner Hub.



Connect – Access a range of specialist communities and events such as our channel enablement workshops, bringing you closer to thought leadership content, partners and experts.



Grow – Through the power of Lenovo 360 Competencies, Lenovo 360 Engage and incentives that drive your achievements, we accelerate your learning and enhance your revenue.



Go further with **Lenovo Accreditations**

Lenovo 360 enables you to succeed and go further, offering Credentials as individual achievements and Accreditations for your business, which are based on the Credentials earned.

Lenovo TruScale Accreditation

Finish the TruScale Device as a Service learning path to obtain your Credential, which will help your business achieve the TruScale Accreditation.

Six courses: 14–16 mins each:

1. TruScale Basics
2. Selling TruScale Through the Channel
3. What to Know P1: Fundamentals of DaaS | Channel
4. What to Know P2: Deeper Dive into Lenovo DaaS | Channel
5. How to Sell P1: What to Ask About and Listen for | Lenovo DaaS | Channel
6. How to Sell P2: Customer Needs Through the Lifecycle | Channel

One exam: Lenovo TruScale DaaS Assessment

Modern Workplace Accreditation

Complete the Digital Workplace Solutions Learning Path to earn your Credential, which counts towards your business' Modern Workplace Accreditation.

Four courses: 8–10 mins each:

1. Overview
2. Collaboration and Productivity
3. Persona-Based Configuration
4. Security

One exam: Lenovo Digital Workplace Solutions Credentials Assessment

Lifecycle Service – Intelligent Devices Accreditation

Complete the Lenovo Intelligent Devices Support Services, Lenovo Intelligent Devices Configuration Services, and the Lenovo Sustainability Services learning paths to earn your credentials. This will help your business gain its Lifecycle Services Intelligent Devices Accreditation.

Three Learning Paths.

Thirteen Courses: 3–10 mins each:
Sustainability Solutions, Asset Recovery Services, CO₂ Offset Services, Reduced Carbon Transport, Services Overview, Upselling from base warranty, APOS, Protection Services, Imaging, Asset Tagging, Custom Bios, Autopilot.

Three exams:

- Lenovo Intelligent Devices Support Services Assessment
- Lenovo Intelligent Devices Configuration Assessment
- Lenovo Sustainability Services Assessment



AI PCs built for business

Smarter
technology
for all

Lenovo

thanks.

Discover all the information and resources you need on Lenovo 360 Partner Hub or contact your Lenovo Channel Account Manager with any questions.