

Lenovo  
ThinkStation

Think anything.

Make everything.

If you think it, you can make it

With Lenovo AI-ready workstations

intel.  
XEON

Conquer your workload with  
Intel® Xeon® processors

Smarter  
technology  
for all

Lenovo

# Lenovo ThinkStation P series

Purposefully built to conquer the most complex of AI workloads with Intel® Xeon® processors.

## P5

The future-proof  
industry workhorse

## P7

Staggering,  
single-processor power

## PX

Superior thermals,  
maximum performance



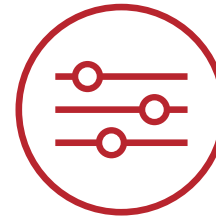
# How do Lenovo Workstations unlock the power of AI?

They provide the processing power and reliability required to support even the most demanding AI workloads, slashing AI project budgets and timelines, while also reducing your reliance on the cloud. Plus, you get the flexibility to customize hardware and software configurations, enabling you to optimize your systems for each specific use case—and turning your inspiration into reality every time.



## High performance

The latest Intel® Xeon® processors combine performance with professional-grade features to handle the most intense compute demands and workloads with ease.



## Customization

Powerful computing capacity according to your requirements with modular design and tool-less access



## Reliability

Packed with performance and extended longevity of your device with a meticulously engineered air-cooling system

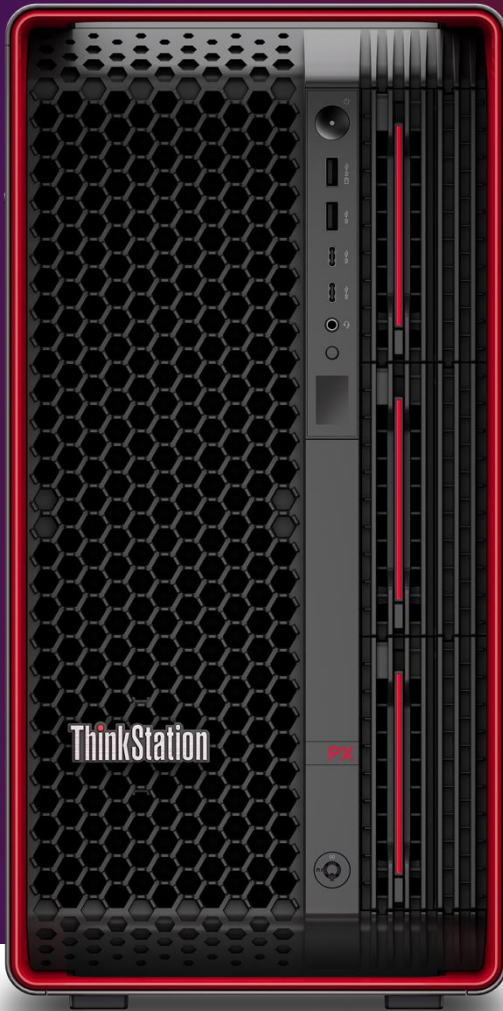


# Supercomputing capabilities and performance

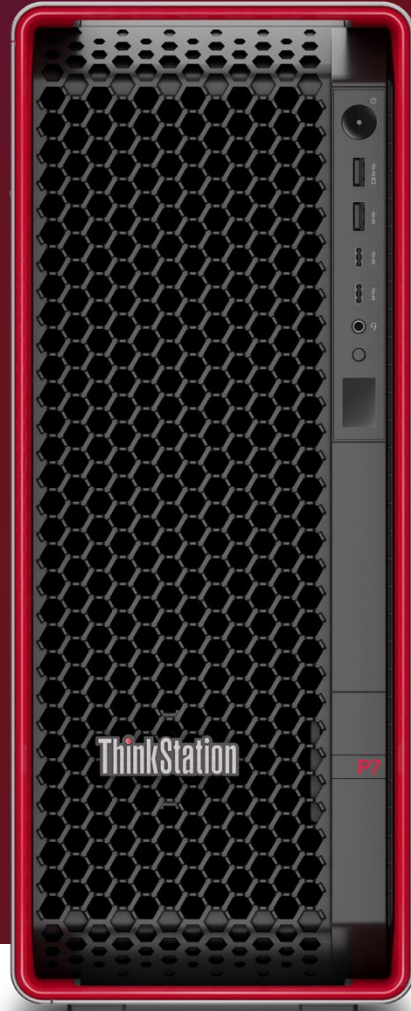
Lenovo Workstations are built with Intel® Xeon® processors and NVIDIA professional GPUs for the highest level of power and performance to handle the most demanding workloads without compromising on efficiency.

Absolutely key for a top performing workstation is the ability to keep its components cool. This is where our patented Tri-Channel cooling on ThinkStation PX comes to fruition. These revolutionary designs allow CPUs and GPUs to run at peak performance until the job is done while simultaneously keeping the components cool, which makes for a long-lasting and reliable machine.





**ThinkStation PX**



**ThinkStation P7**

## Supercomputing capabilities and performance

The ThinkStation PX and P7 are desktop and rack-optimized workstations that offer flexibility for both desktop and data center environments. They are personal supercomputers that can handle complex computing tasks traditionally reserved for cloud or server resources, with a local secure, sandbox development environment while maintaining nondisruptive workstation acoustics. Perfect for multi-user collaborative AI projects that can scale across organizations.

# An ingenious modular design and tool-less access

Customer-driven innovations make upgrades and customizations fast and simple. Lenovo ThinkStation devices are designed to support an amazing number of possible configurations, and, with special workstation-enhanced security features that are readily customizable, you can work safely wherever you are.

Dual redundant PSUs\*



Easy access drives



\*Available option on the ThinkStation PX only

# ISV Certification Brings the Highest Quality Solution





Lenovo  
**ThinkStation**

# The most powerful technology that turns **inspiration** **into reality**

The power of visualization rendering datacentre on these desktops opens the door for architects, designers, and engineers to think anything and make everything.





# ThinkStation PX

## Superior thermals, maximum performance

Go beyond the limits of desktop performance. With an iconic desktop and rack-optimized chassis, and the processing power of multiple high-end GPUs, the PX is the pinnacle of Lenovo technology, designed from the ground up to not just meet but exceed the rigorous performance requirements of today's most advanced AI workflows.



Processor  
Featuring 5th Gen Intel® Xeon® processors and delivers up to 128 cores

ECC Memory  
Up to 4TB of DDR5 memory and ultra-fast bandwidth through PCIe Gen 5 lanes

Graphics  
Up to 4 NVIDIA RTX™ 6000 Ada Generation GPUs



Recommended with **ThinkVision 27 3D Monitor** offers stunning 27-inch, glasses-free, 2D/3D compatible docking monitor designed for more immersive creation, connection, and collaboration—and seamless 3D effects with real-time eye-tracking.



# ThinkStation P7

## Staggering, single-processor power

Tackle compute-intensive, multithreaded tasks head-on with a ThinkStation designed for data scientists, engineers, and high-end creatives. Experience end-to-end AI workflow performance across game development, 3D rendering, computational fluid dynamics, and more.



### Processor

The latest Intel® Xeon® W-3500 processors and delivers up to 60 cores

### ECC Memory

Up to 2TB DDR5 and ultra-fast bandwidth through PCIe Gen 5 lanes

### Graphics

Up to 3 NVIDIA RTX™ 6000 Ada Generation GPUs



Recommended with **ThinkVision P49w-30 Monitor**, offering a seamless, multi-screen productivity with two 27" QHD partition, and a panoramic viewing angle and 2000:1 contrast ratio for sharper, more vibrant colors and deeper blacks.



# ThinkStation P5

## The future-proof industry workhorse

Enjoy ultimate versatility with a ThinkStation optimized for designers, engineers, and creatives alike. This workstation supports a broad range of compute intensive tasks with ease, including BIM, complex 3D CAD, VFX, and edge deployments.



Processor  
The latest Intel® Xeon® W-2500 processors and delivers up to 26 cores

ECC Memory  
Up to 512GB DDR5 and ultra-fast bandwidth through PCIe Gen 5 lanes

Graphics  
Up to 2 NVIDIA RTX™ A6000 GPUs



Recommended with **ThinkVision P32pz-30** featuring dual-color standards (DCI-P3 and Adobe RGB) to accommodate graphic and video use, and built-in flicker-free technology to reduce eye fatigue.



# Lenovo ThinkVision Family & Services



Monitors are no longer simply an extra screen. They're essential hubs of your display centric ecosystem, there to empower productivity with better connectivity, multi-tasking, and user-centric features. ThinkVision enables you to transform technical work and build a comprehensive, display-centric ecosystem—featuring the latest AI innovations and 3D tools.

## Introducing the **Lenovo ThinkVision family**



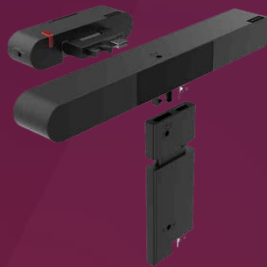
3D Monitor and P/T/E/S



M Series Mobile Monitor



Interactive Large Format Display (iLFD)



3D Monitor and P/T/E/S

## Lenovo ThinkVision Services, Solutions, and Software



Lenovo CO<sub>2</sub> Offset Services



Lenovo TruScale Device as a Service



LADM Software



Lenovo Premier Support Plus



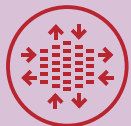
Lenovo Asset Recovery Services

# Lenovo ThinkVision empowering productivity

## Drive productivity with the right technology

By integrating the latest AI innovations, offering 3D tools to transform technical work, and building a comprehensive, display-centric ecosystem, ThinkVision enables smart, modern hybrid work. Across every industry, ThinkVision delivers reliable display solutions tailored to different working needs. All backed by uncompromised 'Think' quality and Lenovo's engineering legacy, and built on deep industry experience, innovation and global design expertise.

### Bringing vision to life with truly immersive visual



10-bit that  
offers over  
1 billion colors



Up to 4K  
display



USB Type-C and  
Thunderbolt™



Daisy Chain



TUV Eye  
Comfort



Desktop  
partition



# Lenovo ThinkVision Monitors Achievements



## Recognised for Delivering Excellence

Highly-acclaimed global reputation, backed up with over 100 awards from top media and partners since 2012



## Empowering Businesses Worldwide

Products spanning 198 countries, and the global reach to empower millions of customers worldwide

### Technology:



### Manufacturing/Energy:



### Education:



### Finance:





# Lenovo Services support your big ideas

Elevate your experience through an end-to-end suite of services and solutions that enhance security, productivity, operational efficiency, and sustainability.



**Lenovo Premier Support Plus**



**Lenovo ThinkShield**



**Lenovo Sustainability Services**





# Lenovo Premier Support Plus

A 24x7x365 advanced support experience, combining seamless support from anywhere, with smarter proactive and preventative services.



## Alleviate IT staff shortages

Working as a seamless extension of your IT team, it reduces pressure to recruit and retain personnel with no worries about staffing during periods of high (and low) demand for support.



## Increase productivity

AI insights deliver proactive and predicting alerts that enable pre-emptive issue remediation, avoiding downtime and giving IT teams more time to focus on strategic efforts.



## Get technical expertise

With direct access to elite Lenovo engineers, customers will receive immediate, unscripted troubleshooting for advanced hardware and software support through chat, phone, or email.



# Lenovo ThinkShield

Complete protection wherever and whenever work happens. ThinkShield safeguards your devices from threats below the operating system all the way to the cloud, with comprehensive security solutions that integrate AI for threat detection and response.



## From the Operating System to Cloud

- Protect devices from cyber threats through endpoint security and management
- Ensure data recovery with data defense and secure cloud backup
- Secure access without traditional passwords with password-less authentication



## Below the Operating System

- Improve privacy protection with features such as webcam shutter and privacy guard
- Access more secure firmware, including self-healing BIOS and HTTPS Boot to help you protect, detect, and recover
- Get peace of mind with secure, tamper-evident packaging with all shipments, and secure disposal which protects and deletes data from drives without external tools



## Supply Chain Assurance

- Gain more transparency of the supply chain and stay protected against emerging threats
- Pinpoint counterfeit or dubious components
- Get a snapshot of the original platform data for easy comparison





## Lenovo Sustainability Solutions and Services

When you invest in Lenovo technology, you can invest in a more sustainable tomorrow too: Lenovo Solutions & Services align with and enhance your sustainability goals.



### Lenovo CO<sub>2</sub> Offset Services

We estimate the value of carbon emissions associated with your Lenovo PCs, Desktops, or Tablets over their average lifecycle, including manufacturing, shipping, and usage. Offsetting emissions can now become part of each hardware purchase, helping you take control of your carbon footprint and make progress towards sustainability faster and more transparently.



### Lenovo Asset Recovery Services

Minimize the environmental impact of end-of-life IT equipment. ARS also aid circularity by reusing parts wherever possible, refurbishing devices, and recycling assets in an environmentally conscious way. You'll receive all documentation and certificates associated with proper data destruction and environmental processing, so you can recover value from decommissioned IT assets to offset the cost of new hardware.



### Lenovo TruScale Everything as a Service

Deploying as-a-service (aaS) solutions with a pay-as-you-go consumption model simplifies and optimizes everything—from procurement to hardware and licensing to infrastructure deployment and management. With Lenovo TruScale Everything as a Service (TruScale XaaS), your technology is always matched precisely to your needs. You only pay for what you use. You get the latest hardware, software, and a suite of end-to-end services. Lenovo manages the rest. This flexible, cost-efficient model scales with your needs so you're never short on processing power and you're not wasting resources on excess capacity.

Lenovo  
ThinkStation

**Think** anything.

**Make** everything.

thanks.

intel.  
XEON

Conquer your workload with  
Intel® Xeon® processors

Smarter  
technology  
for all

Lenovo



# Earn rewards as you sell with Lenovo 360

As a Lenovo partner, we invest in your company's growth through Lenovo 360, with dedicated Lenovo 360 Learning Paths and Accreditations for both Workstation and Services, combined with rich sales and marketing enablement tools. And with the Lenovo 360 Incentives framework, you get rewarded for your growth in both workstation and services skills and sales achievements. What does it mean for your business?



## Higher Tiers

By achieving the Accreditations, your organization can reach higher Tiers in the Intelligent Devices and 360 categories.



## Skilled salesforce

Individual sellers can complete both Workstation and Lifecycle Services Learning Paths to increase their skills and expertise.



## Financial benefits

Unlock additional incentives with each Accreditation, achieve Specialist or Elite level to be eligible for top up rebates, demonstration units, and more.

Note: for Lenovo Partners only

